

# **MINI ILDA V1.8c**

# **USER MANUEL**



## Table of contents

1.	General conditions of use .....	3
2.	Installation of Mini ILDA chart.....	3
3.	Installation du Logiciel Mini ILDA.....	4
4.	Use of MINI ILDA V1.8 .....	5
5.	Creation of a project. ....	6
5.1.	Luminous newspaper.....	8
5.2.	Adjustement of site.....	9
5.3.	Animation ILDA .....	10
5.4.	Logos .....	11
5.5.	Audio Effects.....	12
6.	LOogos Effects : .....	13
6.1.	Adjustement of the execution time .....	14
6.2.	Addition and modification of the effects:.....	14
7.	Réglage laser .....	16
8.	Editor of Logos.....	18
9.	Detail Software .....	19

## **1. General conditions of use**

**Attentively read these instructions before employment.**

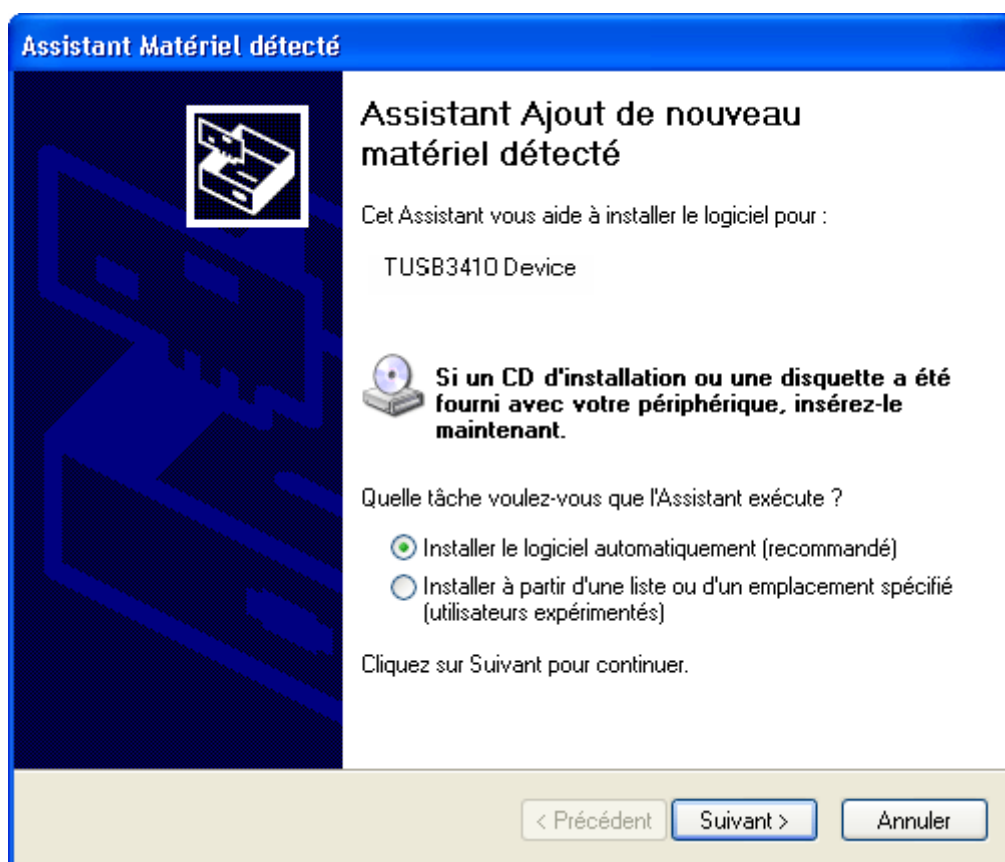
Dice reception of the parcel, control the contents in order to check that there is no consecutive damage with transport. In the event of problem, contact the Company immediately.

Contents of the Parcel:

- Interface MINI ILDA
- CD of installation
- Cord USB

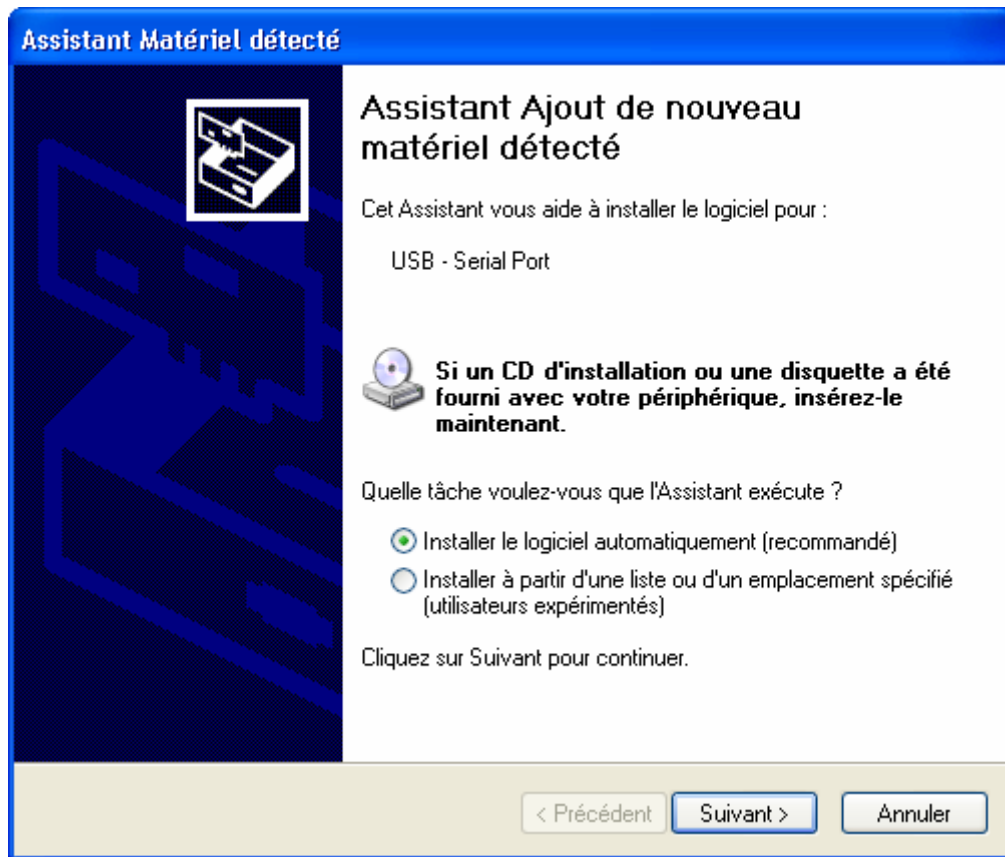
## **2. Installation of Mini ILDA chart.**

For that, your computer must be equipped with a free connector USB. Connect using cord USB the interface Mini ILDA. A Windows message must appear:



Insert CD-ROM of installation delivered with the interface. Then click on "Next".

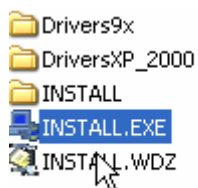
Then after having finished installing the peripheral, a second driver is to be installed. It is recognized in an automatic way:



Click on "Next".

### **3. Installation of the software Mini ILDA.**

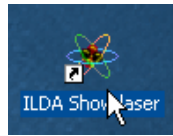
In the station of works, open your reader of CD-Rom. Then launch the Install.exe file with double-click



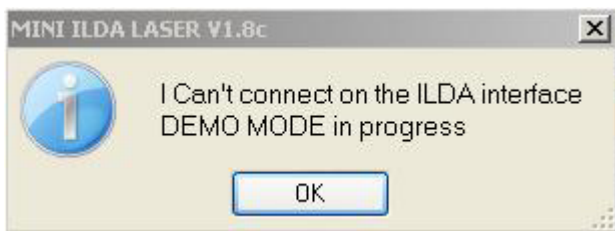
Then follow the instructions to the screen. It is advised not to modify the parameters of installations per defect, in particular for an easy later update of your software.

#### 4. Use of MINI ILDA V1.8

Launch the software Mini ILDA :

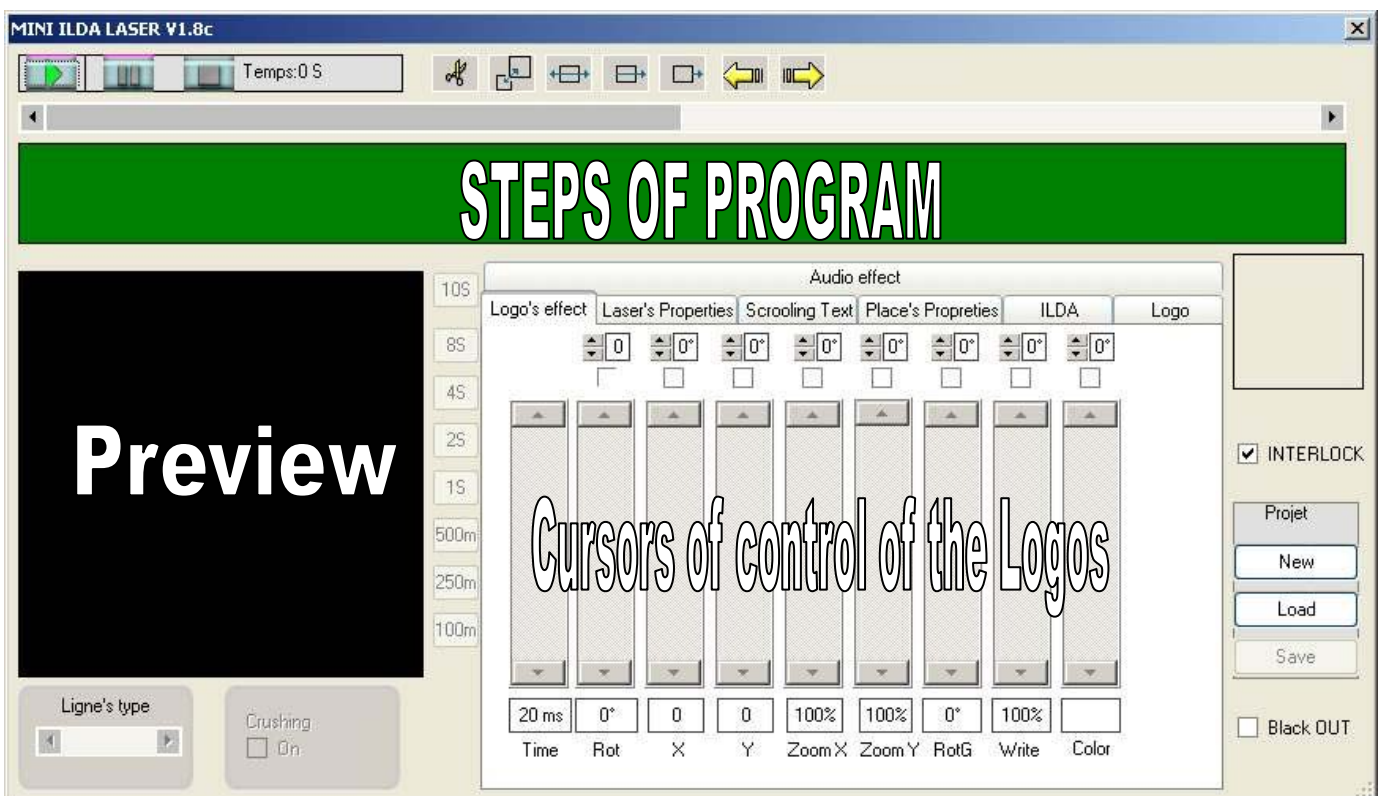


Once launched the software must detect the automatic chart of way. In no case you should have the message:



That means that your interface Mini ILDA is not connected to your computer, or that the drivers of the interface were not correctly installed. In which case, you should take again the process of installation.

When your interface Mini ILDA was recognized by the software, the principal window appears:

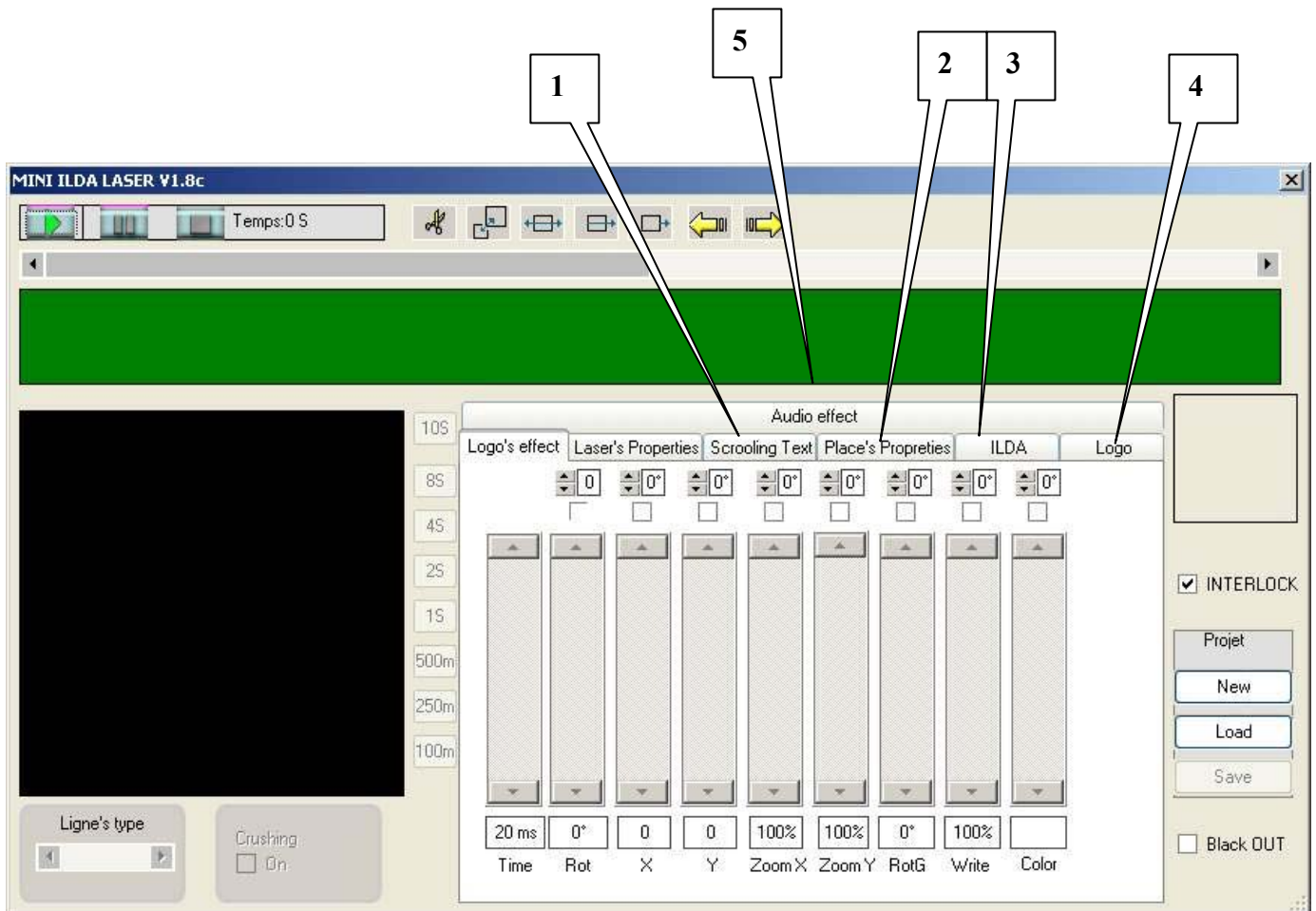


When you use the software, you have access to "information bubble" which appears when you stop the cursor of your mouse on a function.

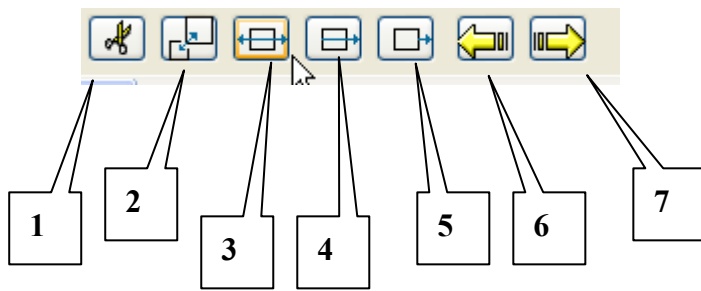
## 5. Creation of a project.

A project (or program), is composed of a sequence of points “cues” (or step of program). You have access to an unlimited number of steps of program to carry out your project. Each step of program gives access to a significant number of adjustments of your laser:

1. Scrolling texte
2. Place's Propreties
3. ILDA Frame
4. aLogo
5. Audio effect

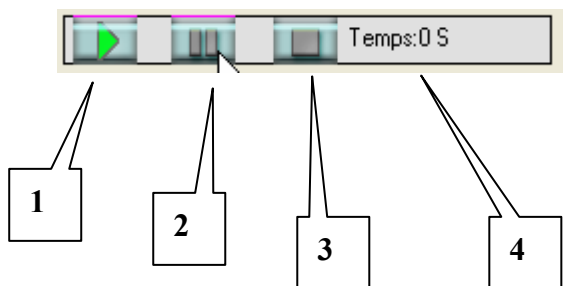


To build your project, the icons according to you make it possible to cut, copy or move a step in your program.



- 1 – Cut a step
- 2 – Copy a step
- 3 – Insert a step
- 4 – Insert a step after
- 5- Copy at the end of the project
- 6 – Move on the left
- 7 – Move on the right

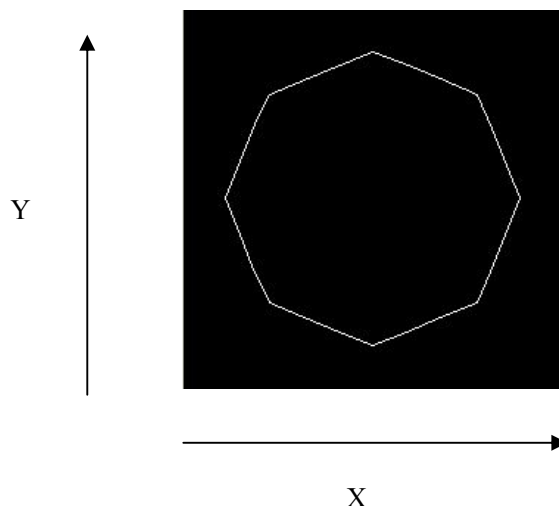
To read your project and to connect the steps use the bar of tool for reading:



- 1- Read the project
- 2- Pause in the reading of the project
- 3- Stop reading the project
- 4- Execution Times of the step in progress..

## IMPORTANT !!

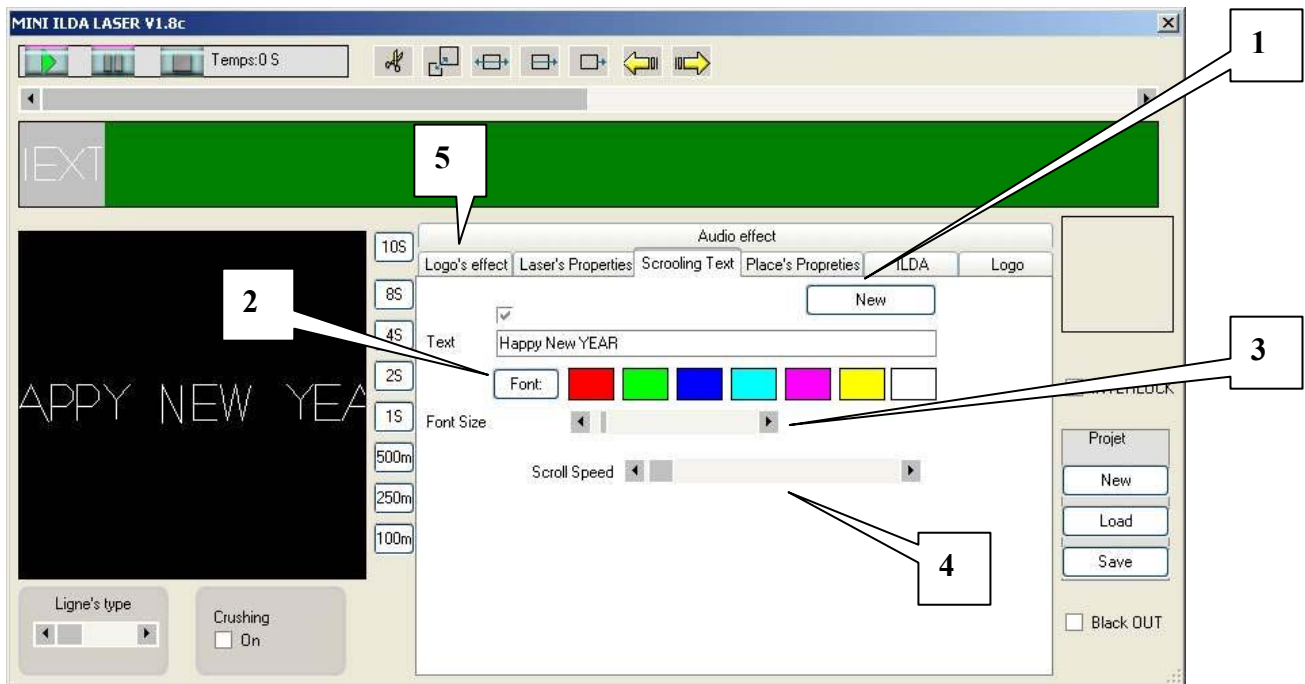
When you go use various animations which are described in the continuation of this handbook, you will see that there is often makes reference to co-ordinates X and y. It is important to understand that the figures reproduced by your laser correspond to a point which moves, and to which is affected a co-ordinate X and one co-ordinate y:



### 5.1. Scrolling text

Click on "New" (1) creating a scrolling text. Enter your text in the zone text. You can choose the color of your text (if your laser is multicoloured), as well as the font of writing (2). You can also regulate the size of the font (3) and the tape speed of your scrolling text (4). You can insert scrolling text as many you want in your project. You can add effects on your scrolling text by using the Logo's effects (5). For the detail of the use of the logo's effects, defer to the chapter [6 Logo's Effects](#).

When the text of your scrolling text is finished, the step of following program is launched.



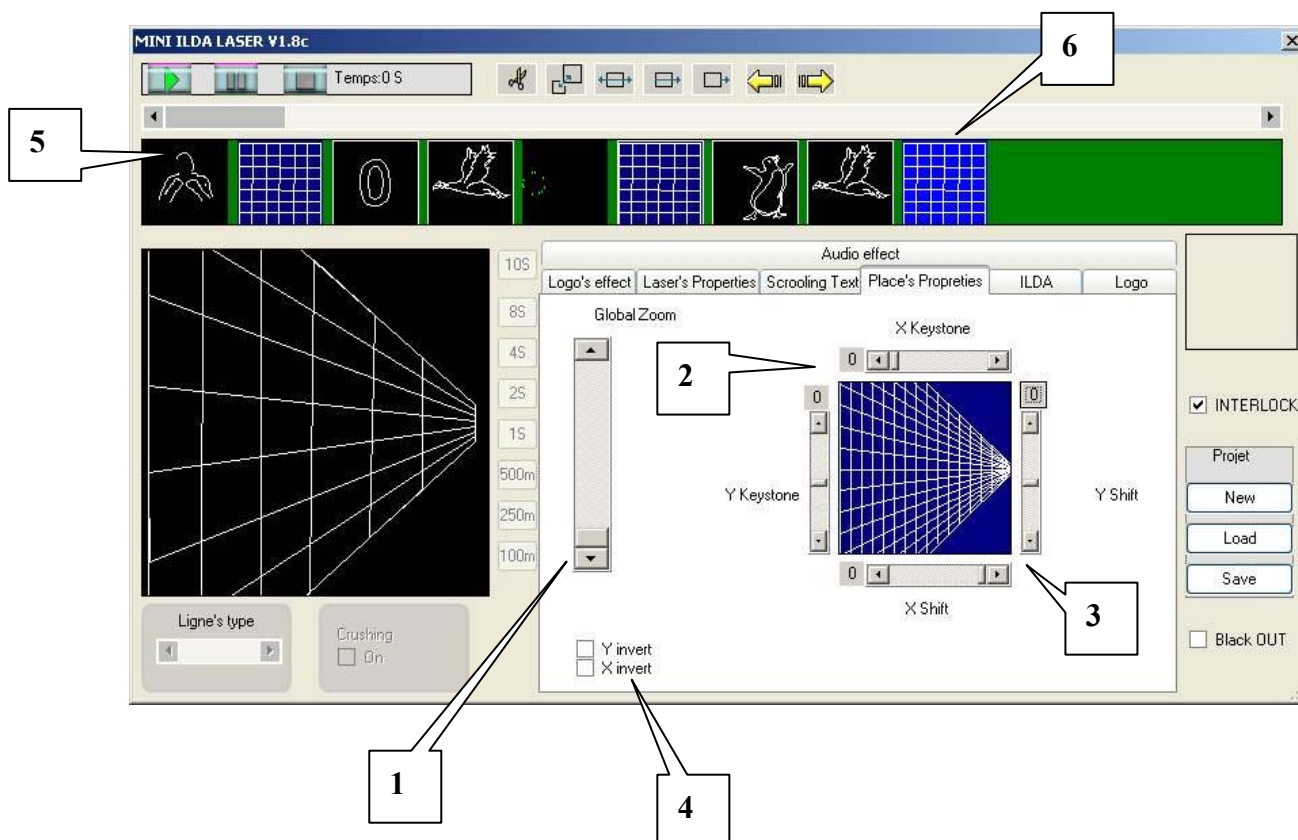


## 5.2. Place's Properties

The place's properties enables you to modify the jetting angles of the figures, to adapt to the site of projection, as for example when you to regulate an overhead projector so that it projects of with dimensions.. To insert an adjustment site in project, click on the blue squaring and made slip it into the green zone of creation of your project. All the steps of program which follow the adjustment site will be modified. Free with you then to add a second adjustment site, to return to the default values, or to project on another support.

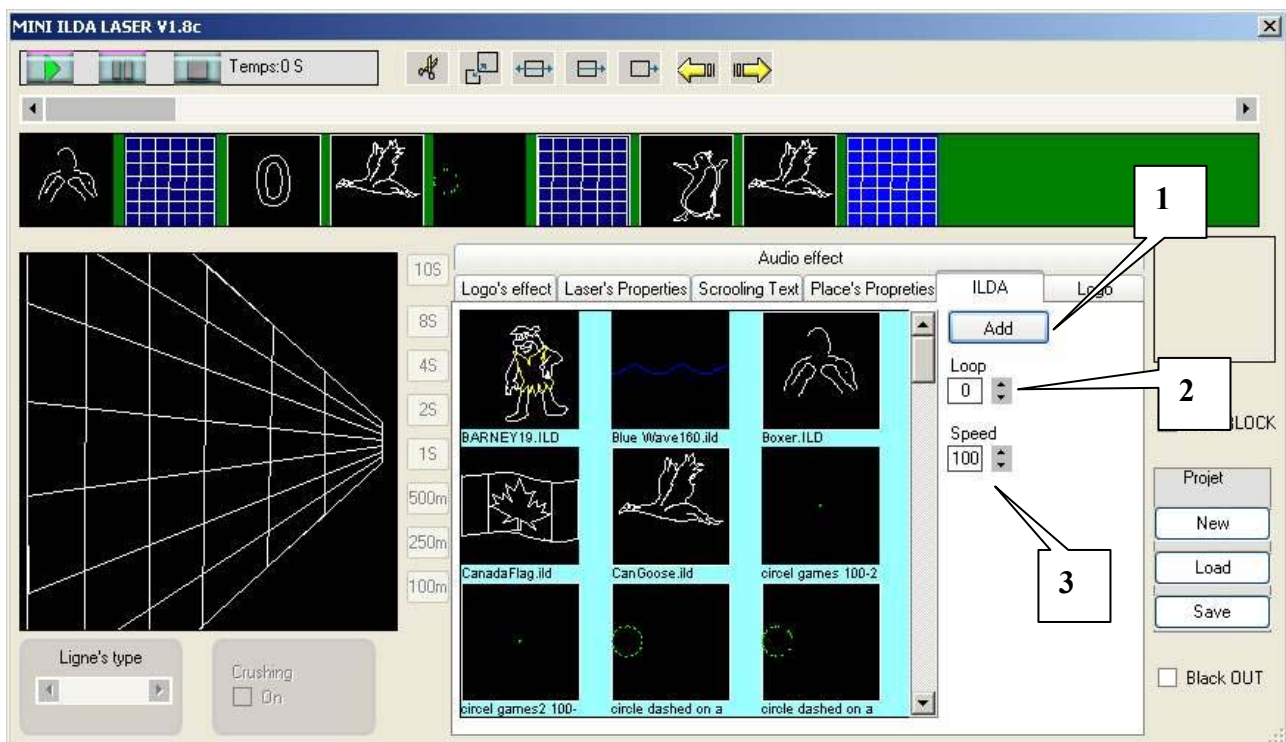
You can adjust a general zoom (1), the trapezoid in X or y (2) and one displacement in X or y (3). You also have the possibility of reversing X or y (4). Your laser will then reproduce the steps of programs reversed on X or y. That can be very useful for example to provide to read a Scrolling text whereas this one is projected by behind on a screen.

Caution! As your project turns in loop, if there is no adjustment site at the beginning of program, the first logos will be dependent on the last place's properties carried out. In the example below, the scrolling text (5) depends on the last place's properties (6).



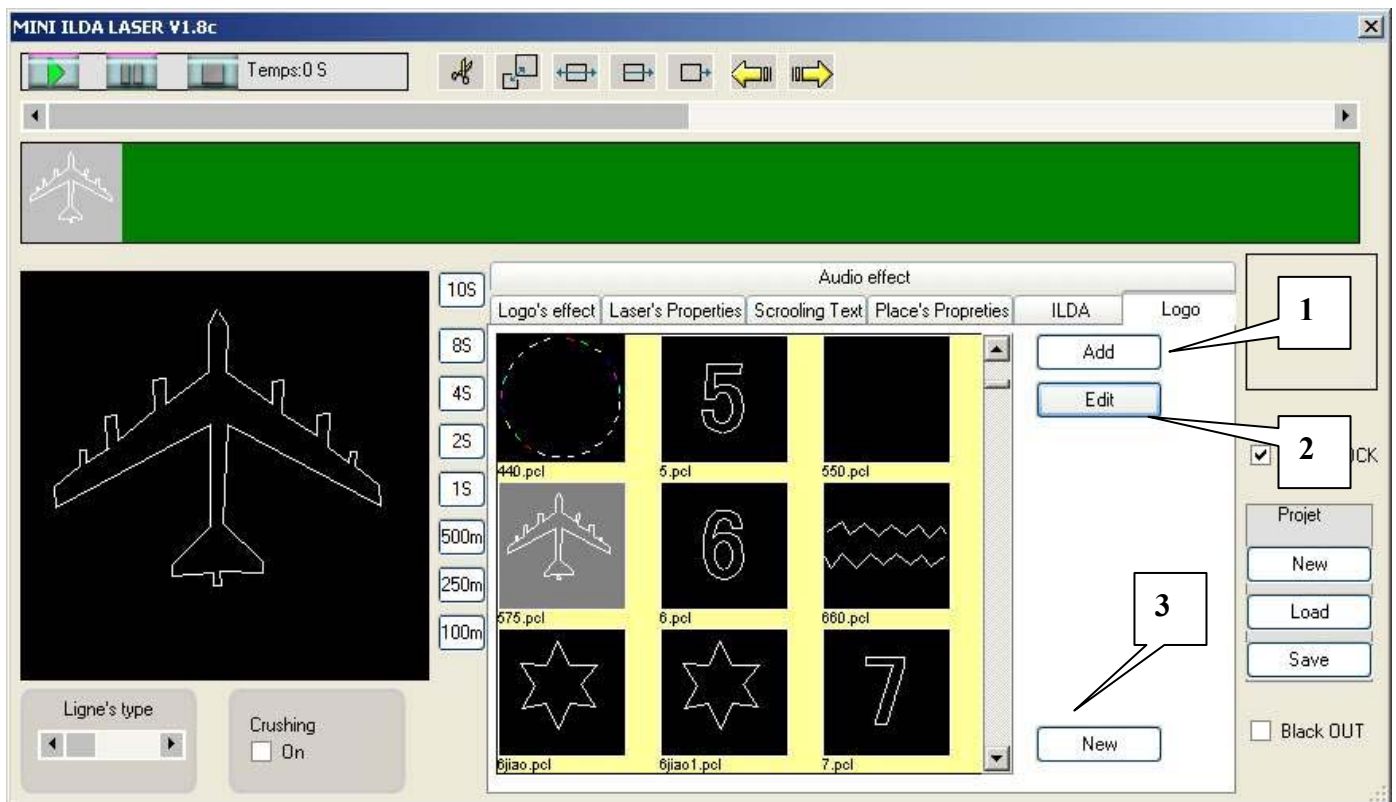
### 5.3. Animation ILDA

Animations ILDA are ready animations all which you can insert in your project. For that, to click on animation desired and made slip it into the green zone of creation of your project, or click on the button "Adds" (1). You can add effects to your animations ILDA using the logo effects (see chapter 6 Logo Effects:). You can also choose the number of times or animation will be played before passing to the step of following program, while playing on the meter of loops (2). You can also regulate the speed of execution of animation (3). Your program Mini ILDA was delivered to you with certain numbers animations, but you can add of them others in the file C:\Program Files\ILDA Show laser\LOGOS. These animations, with format ILD can in particular be find on the web.



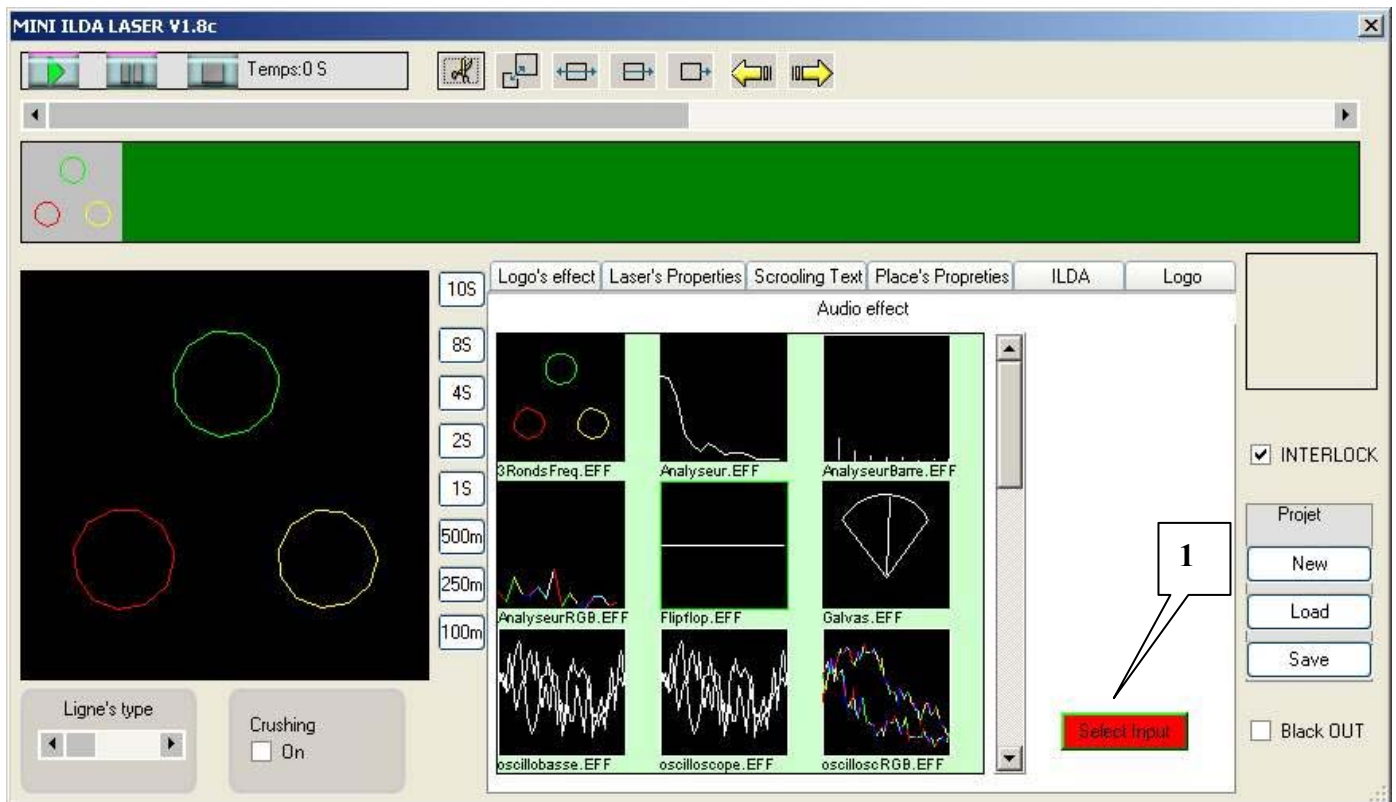
### 5.4. Logos

The Principle of the logos is the same one as for animations ILDA. To add a logo to your project, to click on the logo desired and made slip it into the green zone of creation of your project, or click on the button "Add" (1). You can add effects to your logos thanks to the logo's effects (see chapter 6 Logo's Effects:). You can also modify a logo while clicking on the Edit button (2) or create your own logo while clicking on the button "New" (3). These 2 actions open the editor of logo to you. To use the editor of logo, defer to the chapter 8 Editor of Logos.



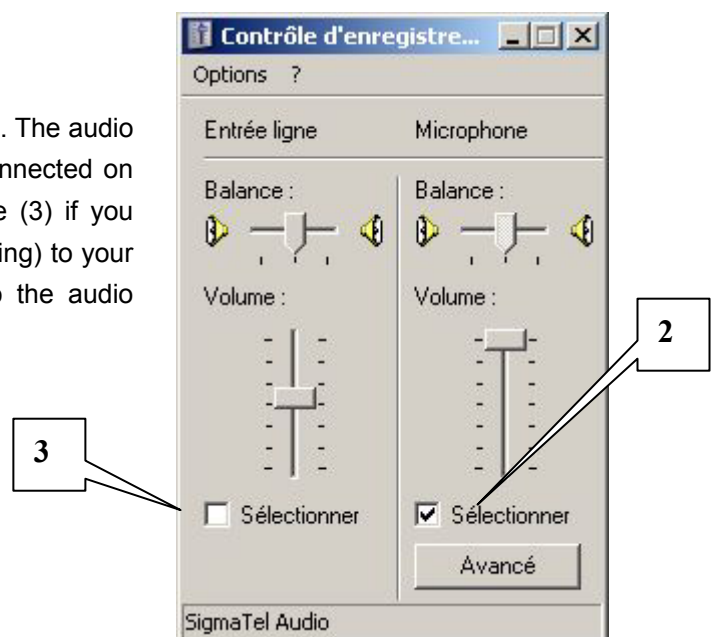
### 5.5. Audio Effects

The audio effects can be added with your project like animations ILDA or logos. Click on the desired effect and made slip it into the green zone of creation of your project. These effects become animated at the rhythm of the music. For that, your computer must be connected to a source of sound, which you select while clicking on "Select Input" (1).



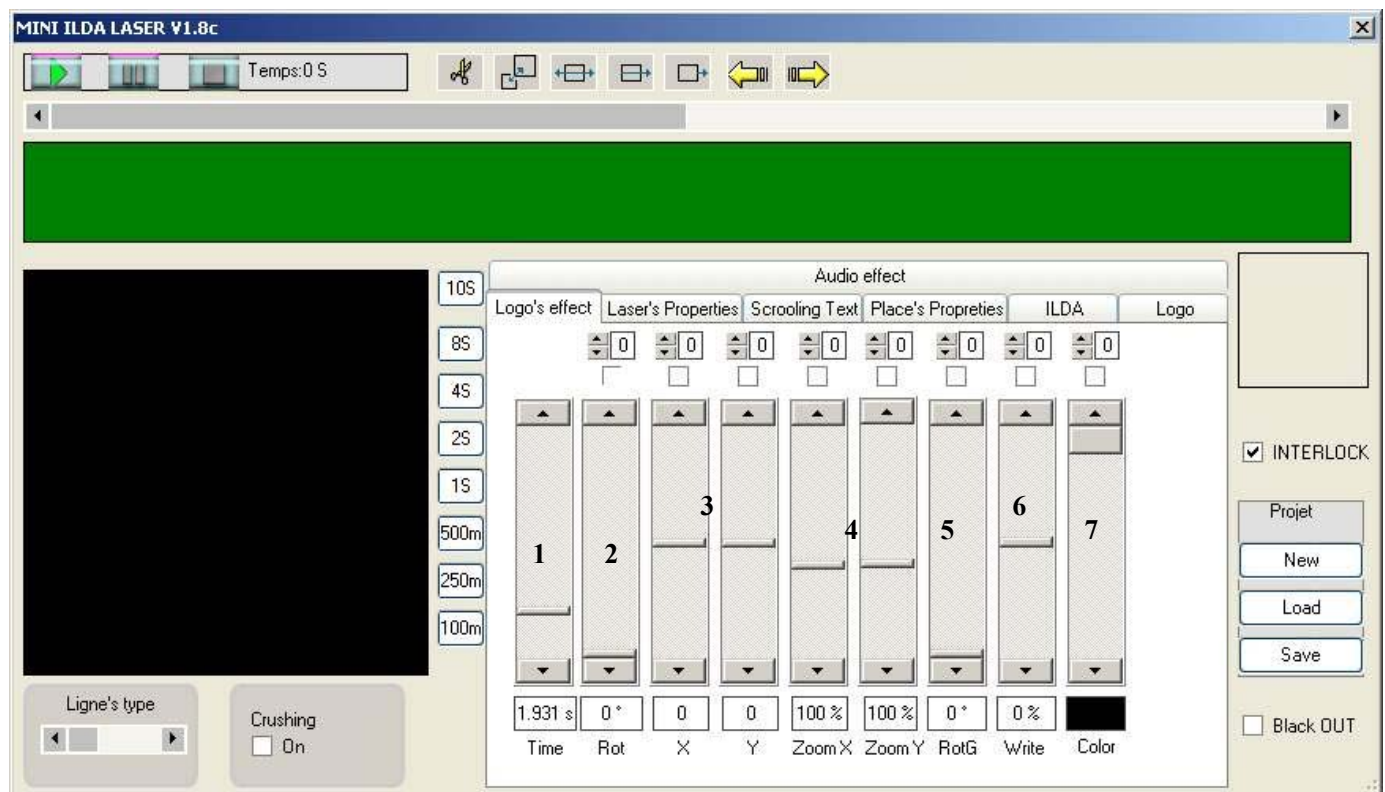
You must then choose your entry sound:

In our example it is the audio input (2) which is selected. The audio effects will thus move according to the microphone connected on the micro catch of the computer. Select the entry line (3) if you directly connected a source (for example a table of mixing) to your PC NB: The screen opposite can differ according to the audio configuration of your computer.



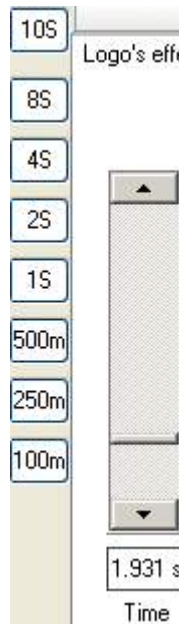
## 6. Logos Effects :

The logos effects enable you to personalize each step of your project. You can thus regulate the execution time of the step of program (1), a rotation of the logo (2), a shift in X or Y (3), a zoom on X or y (4), a rotation General of the logo with application of the effects (5), a choice of writing to reveal and to disappear the logo, or to carry out of it only one part (6) and finally the color of posting if your laser is multicoloured (7).





### 6.1. Adjustement of the execution time

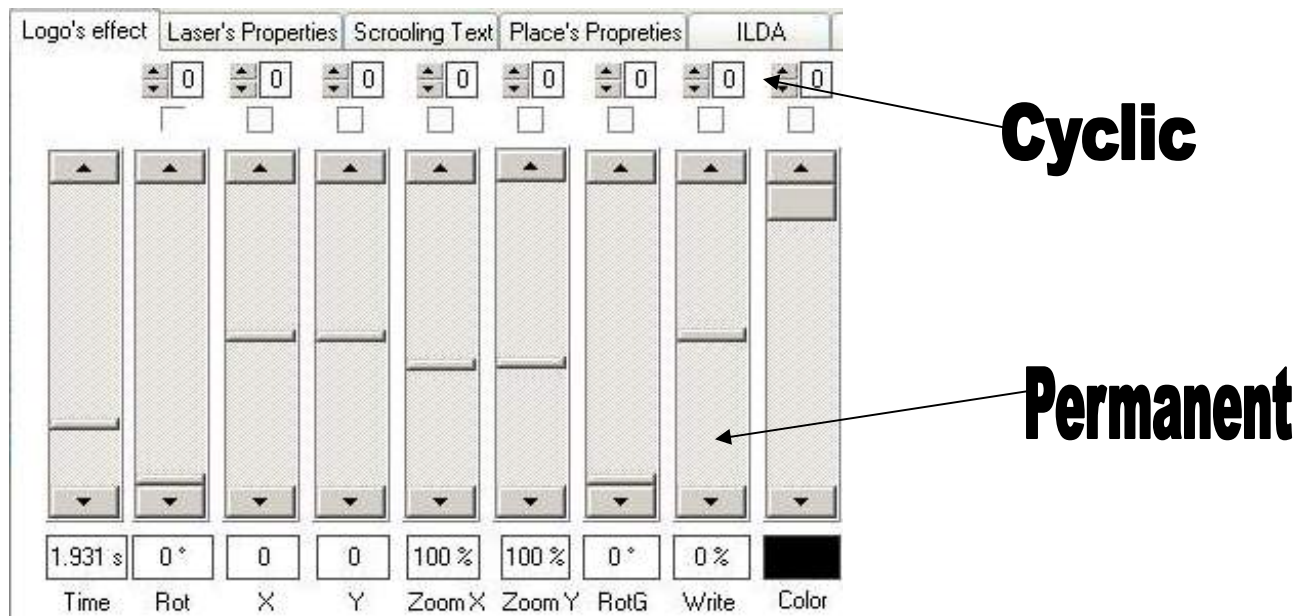


To modify the execution time of a program, you have 2 possibilities:

- The Buttons "100m" "250m" "500m" "1S" "2S" "4S" "8S" "10S" configure the execution time instantaneously.
- The potentiometer allows a precision adjustment.

### 6.2. Addition and modification of the effects:

Each effect can be applied in a permanent way or a cyclic way:



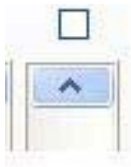


When you use a cyclic effect the figure represents the speed of the effect. Use the arrows high and low to vary this figure. The cyclic mode has priority on the permanent mode.

If you use the permanent effect, you have 2 possibilities to apply it:



- If the effect is notched: During the execution time of the step of program, the effect "Slips" with the regulated position. Example: Rotation is regulated with  $45^\circ$ , if with the step of program precede rotation were regulated with  $0^\circ$ , during the execution time of the step rotation "slips" until the position  $45^\circ$



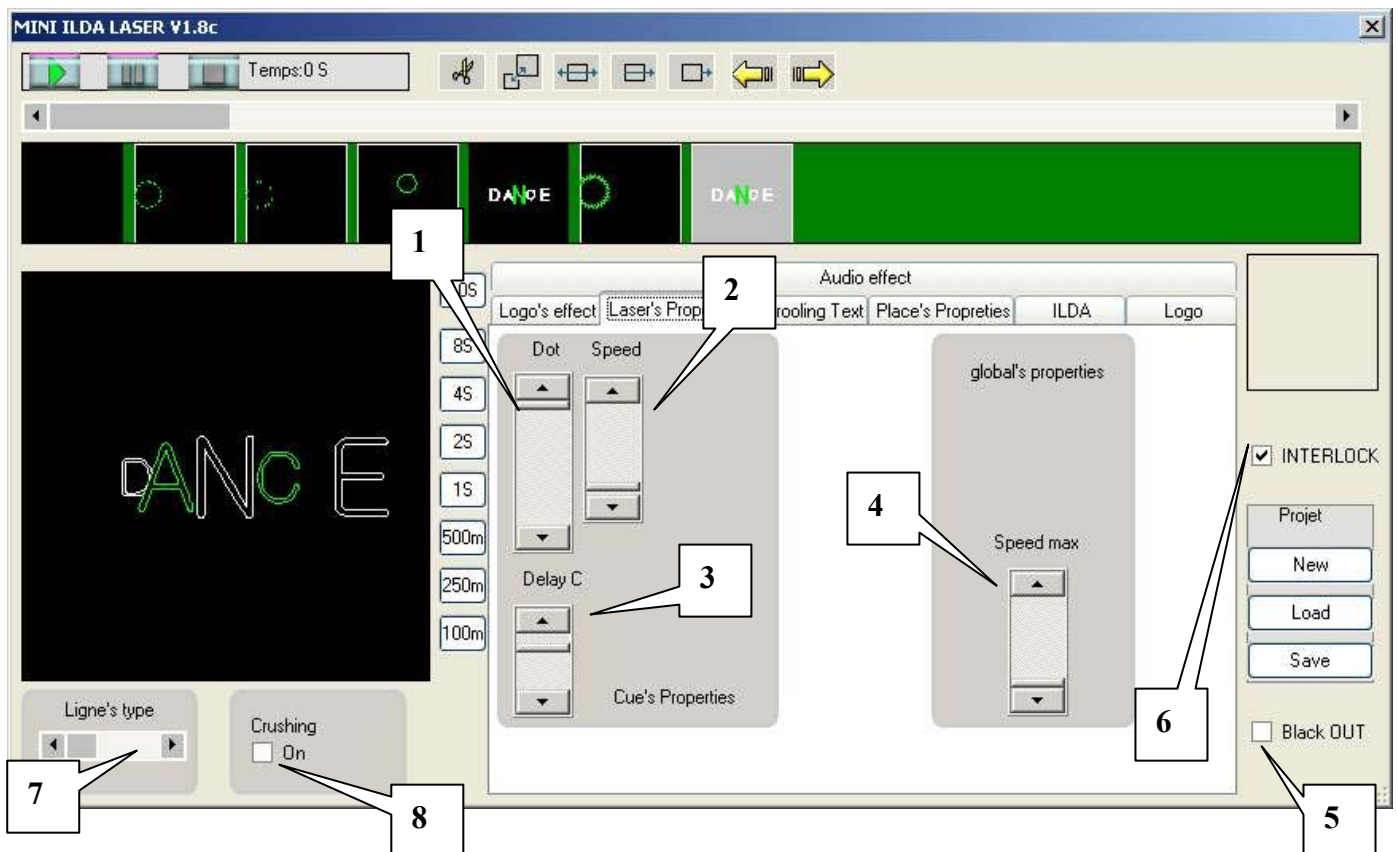
If the effect is not notched: during the step of program, the effect is fixed. Example if rotation is fixed at  $45^\circ$ , during all the time of execution of the step of program, the Logo will be maintained with  $45^\circ$ .

## 7. Laser properties

This mitre makes it possible to make adjustments compared to the writing of the laser

On the logos : You will be able to give a rain effect to the writing, while playing on the size of the points of connections (1). You also will be able to modify the speed of writing of the laser (2). Lastly, if you have a multicoloured laser, you can exploit the latency of the beam between 2 changes of color (3)

On your program : You can exploit the speed of writing of the laser (4)



Other adjustments are available some is the mitre or you are: Black OUT (5), Interlock (6) of feature (7) and crushing (8).

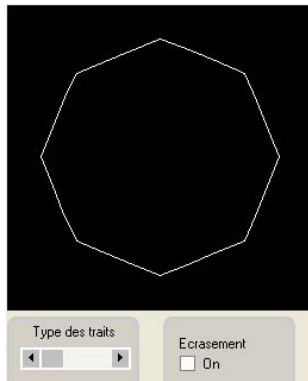
Black OUT(5) : If you notch this box you extinguish the beam of your laser

Interlock(6) : If your laser is compatible with this function, you can, by notching this box, to leave mode ILDA of piloting of your laser, for, for example taking again the control of your laser in mode DMX.



Ligne's type(7) : You can thanks to this cursor modify the type of writing of your laser to write entièrement(A), by points(B) or intermittence(C)

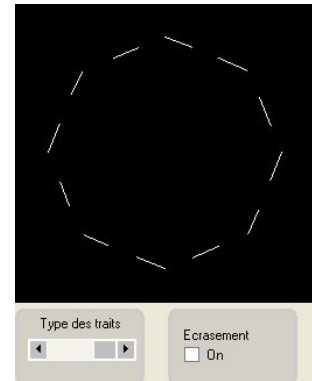
:



**A.**

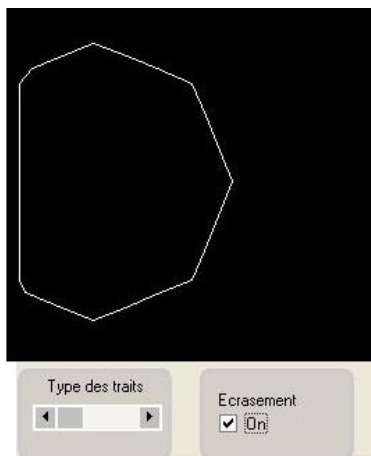


**B.**

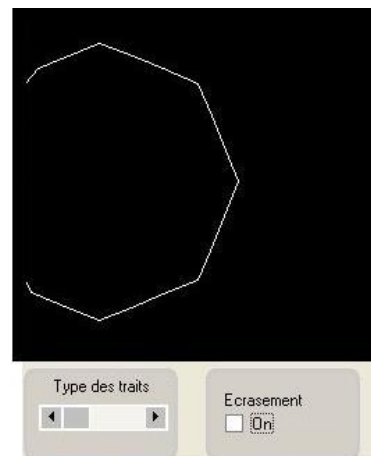


**C.**

Crushing (8) : By notching this box, your logo gives the impression "to be crushed" if it leaves the window of execution.



**With Crushing**



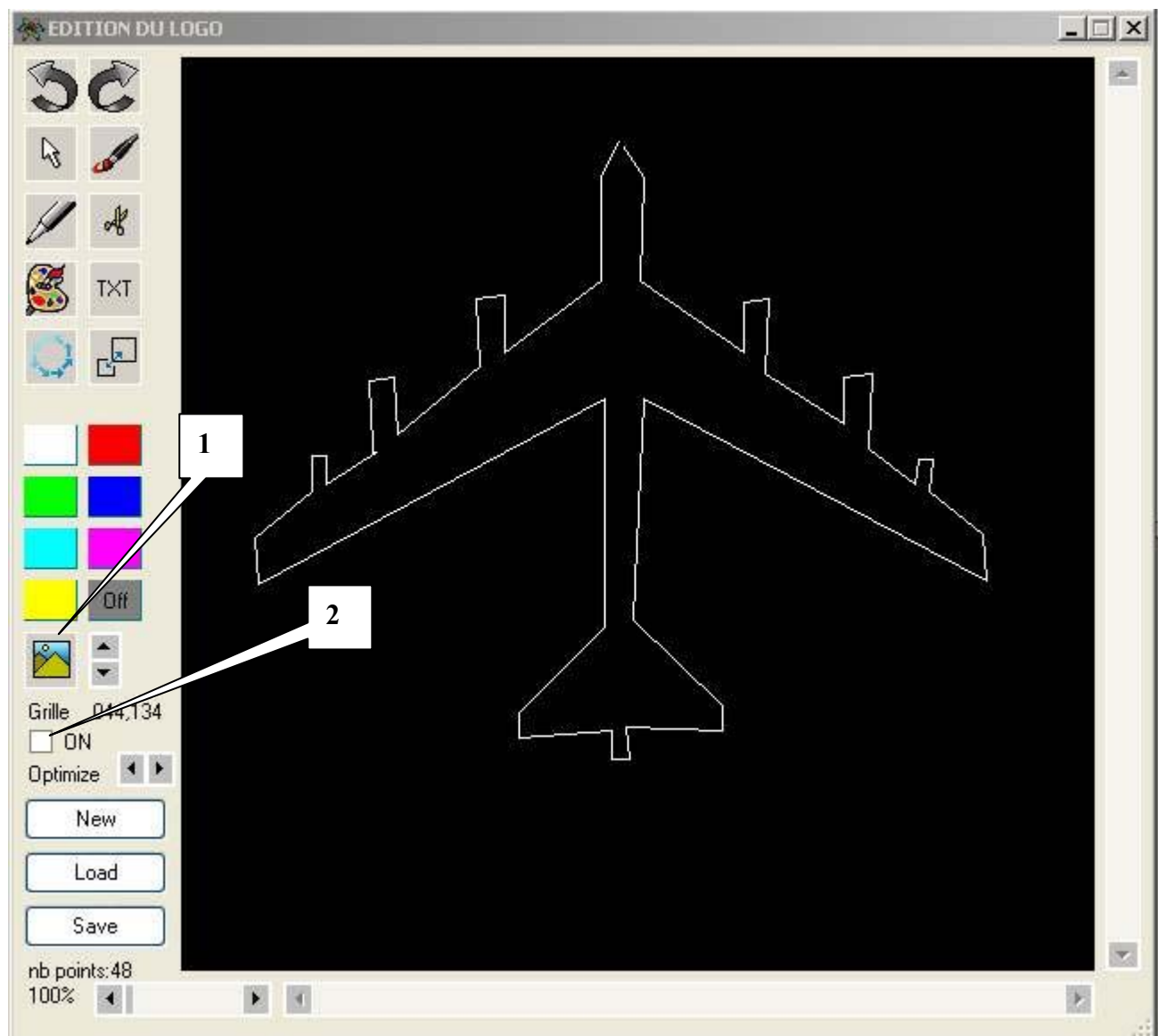
**Without Crushing**

## 8. Editor of Logos

If you have launch the editor of logos starting from the mitre "Logos", the screen below appears. This editor allows you to create a logo of all parts, or to modify an existing logo. This editor functions like a traditional editor of drawing (like "Paint"). Help infos-bubbles to have details on the graphic functions.

To help you with the drawing, you can insert a basic image (1). This functionality is very practical for, for example, to draw a logo of which you have the photograph. You will not have then any more whom has it "to recopy", as on a tracing paper. You can also reveal a grid to help you (2)

If your laser is moving, it will reproduce in time real what you are drawing.



## **9. Detail Software**

This software is regularly updated on the official site:

Each update enables you to bring new functionalities to your Laser. New logos and animations are also added

For any question and Support of do not hesitate has to use the forum of the site.

The TEAM.